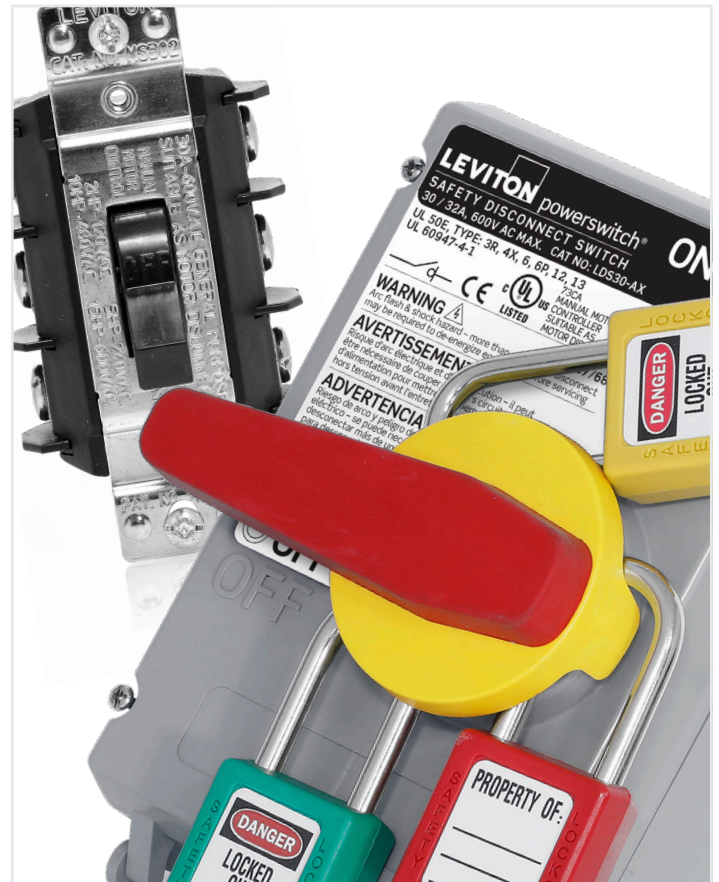


powerswitch® Industrial Switches & Motor Controls

SELECTION GUIDE



powerswitch® Manual Motor Controllers

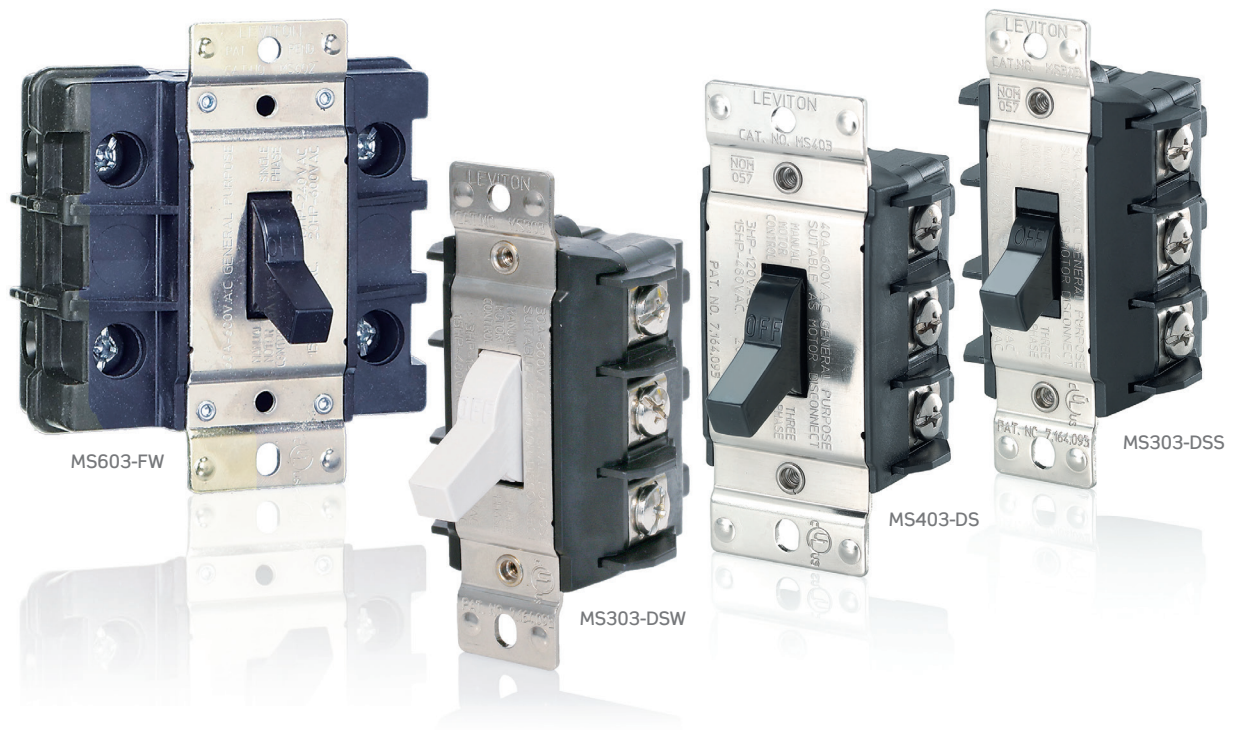
OVERVIEW

Powerswitch® industrial grade AC Manual Motor Controllers provide safe, reliable control of a variety of motor loads. Suitable for use as motor disconnect*, these switches are available for both single-phase and three-phase applications, with a continuous current rating at voltages up to 600 VAC and maximum horsepower ratings of 30 hp. Metallic and non-metallic enclosures are available, including NEMA Type 1, Type 3R, and Type 4X, to suit a wide variety of applications.

* 30 A & 40 A only

Component Switches

30 A, 40 A, 60 A



ORDERING GUIDE

Switch Type	Rating	Poles	AC Horsepower Rating (hp)				Wiring	Toggle Type	Toggle Color	Cat No
			120 V	240 V	480 V	600 V				
Manual Motor Controller Suitable as Motor Disconnect	30 A	2-Pole (1Ø)	2	5	10	15	Back/Side	Standard	Black	MS302-DS
			2	5	10	15			White	MS302-DSW
		3-Pole (3Ø)	3	7½	15	20	Back/Side	Standard	Black	MS303-DS
			3	7½	15	20			White	MS303-DSW
	40 A	2-Pole (1Ø)	2	5	10	15	Back/Side	Standard	Black	MS402-DS
		3-Pole (3Ø)	3	7½	15	20	Back/Side	Standard	Black	MS403-DS
Manual Motor Controller	60 A	2-Pole (1Ø)	—	10	15	20	Back	Standard	Black	MS602-BW
			—	10	15	20	Front	Standard	Black	MS602-FW
		3-Pole (3Ø)	—	10	25	30	Back	Standard	Black	MS603-BW
			—	10	25	30	Front	Standard	Black	MS603-FW

FEATURES

- All molded parts are thermoplastic to resist impact, chemicals, temperature, tracking and arcing
- Cam-driven mechanism enhances fast-make/slow-break
- Listed to UL 60947-4-1 (formerly UL 508)
- Silver-alloy contacts for maximum conductivity and service life
- 30 A and 40 A switches feature external clamps for back and side wiring; 60 A switches available in front-wire or back-wire versions
- Insulating barrier between terminals provide isolation between phases
- Nickel-plated brass mounting strap, terminal screw and external clamps for superior strength and corrosion resistance
- Oversized toggle provides positive actuation, even with gloved hand
- Short toggle versions (DSS) available in 30 A and 40 A for when shorter depth is required
- Backed by a Limited Ten-Year Warranty
- 30 A standard toggle versions (DSW) available in white

Enclosed Switches

30 A, 40 A, 60 A



ORDERING GUIDE

Switch Type	Rating	Poles	AC Horsepower Rating (hp)				Toggle Type	Enclosure	Cat No
			120 V	240 V	480 V	600 V			
Manual Motor Controller Suitable as Motor Disconnect	30 A	2-Pole (1Ø)	2	5	10	15	Standard	Type 1 Metal	N1302-DS
			2	5	10	15	Pistol Grip	Type 3R Metal	N3302-DS
			2	5	10	15	Pistol Grip	Type 4X Non-Metallic	MS4X-302†
	3-Pole (3Ø)	3	7½	15	20	Standard	Type 1 Metal	N1303-DS	
		3	7½	15	20	Standard	Type 1 Non-Metallic Cover	N1303-TDS	
		3	7½	15	20	Pistol Grip	Type 3R Metal	N3303-DS	
40 A	3-Pole (3Ø)	3	7½	15	20	Pistol Grip	Type 4X Non-Metallic	MS4X-303†	
		3	7½	15	20	Pistol Grip	Type 4X Non-Metallic	MS4X-402†	
Manual Motor Controller	60 A	2-Pole (1Ø)	—	10	15	20	Pistol Grip	Type 3R Metal	N3602
		3-Pole (3Ø)	—	10	25	30	Pistol Grip	Type 3R Metal	N3603



† MS4X Series Disconnects are NSF Certified

powerswitch® Safety Disconnect Switches



OVERVIEW

Powerswitch® safety disconnect switches are designed for superior performance in food and beverage processing, manufacturing, marinas and shipyards, and OEM applications. Available in both stainless steel as well as PBT enclosures these devices are built to withstand the rigors of harsh environments, addressing the needs for safety, washdown procedures, reduced downtime and code compliance. All Powerswitch safety disconnect switches are backed by an industry leading 3 year warranty.

Stainless Steel Disconnect Switches

Slope Top 30/32 A, 60 A, Non-Fused

Flat Top 30/32 A, 60 A, 80 A, 100 A, Non-Fused



FEATURES

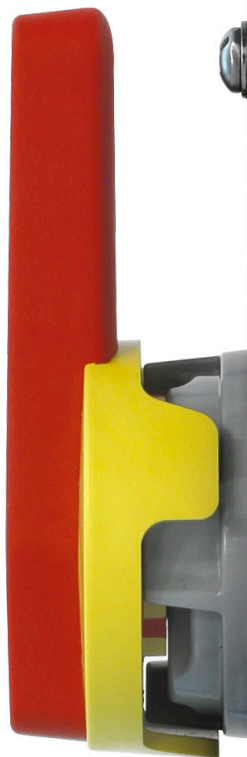
- Type 304 stainless steel resists heat, corrosion and abuse
- Watertight, dust-tight, submersible and suitable for high pressure, high temperature washdown
 - IP66, IP67, IP68 and IP69K
 - UL 50E Type 3R, 4X, 12, 13
- Slope top versions feature a 15° slope towards wall, pushing water and debris away from door, handle, gasket and front of device (30/32 A and 60 A versions only)
- Overmold handle provides firm grip, durability and withstands washdown
- Handle accommodates 3 padlocks for OSHA compliant lockout/tagout
- Removable cover door makes installation and servicing simple and quick
- NSF Certified for hygiene requirements in food & beverage processing
- ¾" standoff from mounting surface allows for easy cleaning

ORDERING GUIDE

Amp	Cat No	Description	AC Horsepower Rating (hp)									
			Single Phase				Three Phase					
			120 VAC	208 to 240 VAC	480 VAC	600 VAC	208 to 240 VAC	480 VAC	600 VAC			
30/32 A	MDS3-ST	Slope Top, Non-Fused										
	MDS3-AST	Slope Top, Non-Fused w/Aux. Contact AUXNO	2	5	5	5	10	20	25			
	MDS3-AX	Non-Fused										
	MDS3-AC	Non-Fused w/Aux. Contact AUXNO	2	5	5	5	10	20	25			
60 A	MDS6-ST	Slope Top, Non-Fused										
	MDS6-AST	Slope Top, Non-Fused w/Aux. Contact AUXNO	2	10	20	20	20	40	40			
	MDS6-AX	Non-Fused										
	MDS6-AC	Non-Fused w/Aux. Contact AUXNO	2	10	20	20	20	40	40			
80 A	MDS8-AX	Non-Fused										
	MDS8-AC	Non-Fused w/Aux. Contact AUXNO	2	10	20	20	20	40	40			
Amp	Cat No	Description	AC Horsepower Rating (hp)									
			Single Phase					Three Phase				
			120 VAC	220 to 240 VAC	277 V	440 to 480 VAC	550 to 600 VAC	110 to 120 VAC	220 to 240 VAC	240 VAC	440 to 480 VAC	550 to 600 VAC
100 A	MDS1-AX	Non-Fused										
	MDS1-AC	Non-Fused w/Aux. Contact AUXNO	7.5	20	25	30	30	15	40	30	60	50

SAFETY DISCONNECT SWITCH ACCESSORIES APPEAR ON BACK COVER

Slope top versions feature a 15° slope towards wall, pushing water and debris away from door, handle, gasket and front of device (30/32 A and 60 A versions only)



TURN OFF BEFORE OPENING ENCLOSURE
 METTRE L'INTERRUPTEUR EN POSITION ARRÊT AVANT D'OUVRIER L'ENVELOPE
 APAGE ANTES DE ABRIR LA CAJA

WARNING ⚠

ARC FLASH AND SHOCK HAZARD - MORE THAN ONE SUPPLY DISCONNECT MAY BE REQUIRED TO DE-ENERGIZE EQUIPMENT BEFORE SERVICING

AVERTISSEMENT

ARC ELECTRIQUE ET RISQUE D'ELECTROCUTION - PLUS D'UN INTERRUPTEUR GENERAL PEUVENT ETRE REQUIS POR METTRE HORS TENSION AVANT L'ENTRETIEN

ADVERTENCIA

ARCO ELECTRICO Y PELIGRO DE CHOQUE ELECTRICO - PUEDE REQUERIR MAS DE UN INTERRUPTOR PARA DESCONECTAR LA ENERGIA DEL EQUIPO ANTES DE HACER MANTENIMIENTO

powerswitch® Safety Disconnect Switches

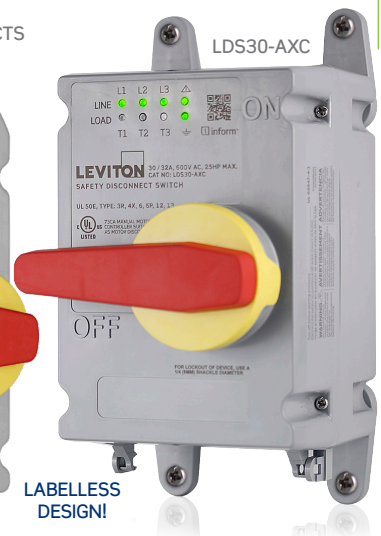
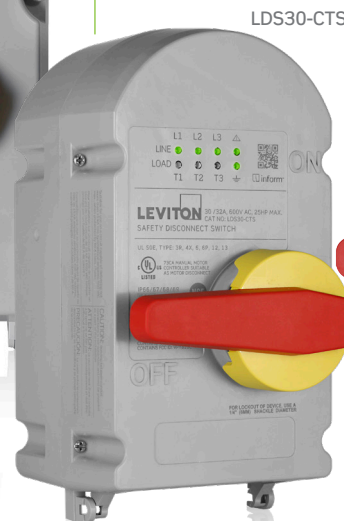


All Powerswitch safety disconnect switches from Leviton are certified to NSF International hygiene requirements for food & beverage processing to help ensure public health and safety. Manufacturers, regulators and consumers look to NSF International for the development of public health standards and certification programs that help protect the world's food, water, consumer products and environment.

Non-Metallic Disconnect Switches 30/32 A, 60 A, 100 A, Fused & Non-Fused

FEATURES

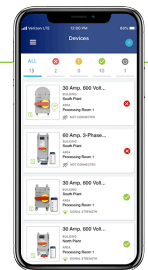
- PBT enclosure resists impact, abuse and corrosion
- Watertight, dust-tight, submersible and suitable for high pressure, high temperature washdown
 - IP66, IP67, IP68, IP69 and IP69K
 - UL 50E Type 3R, 4, 4X, 6P, 12, 13
- Curve top versions push water and debris away from door, handle, gasket and front of device (30/32 A only)
- Overmold handle provides firm grip, durability and withstands washdown
- Handle accommodates 3 padlocks for OSHA compliant lockout/tagout
- NSF Certified for hygiene requirements in food & beverage processing
- Operating temperature ranges from -40°C to 75°C (-40°C to 65°C for Inform units)
- Captive, triple head cover screws constructed of stainless steel



Condition Monitoring

24/7 access to data like current, liquid accumulation, enclosure temperature and humidity, ground continuity, individual line- and load-side voltage values, and more.

Understand what's going on inside your devices without having to open them, improving safety, predictive maintenance, and minimizing unplanned downtime.

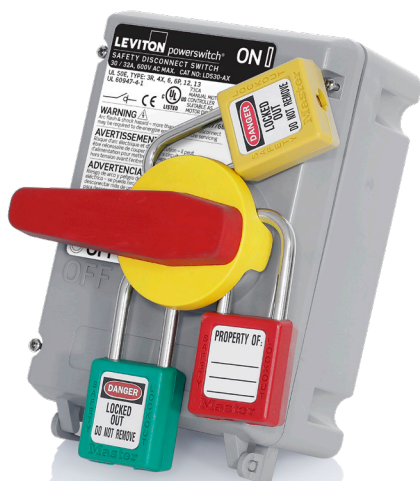


LABELLESS DESIGN!

ORDERING GUIDE

Amp	Cat No	Description	AC Horsepower Rating (hp)								
			Single Phase				Three Phase				
			110 VAC	120 VAC	208 to 240 VAC	480 VAC	600 VAC	208 to 240 VAC	480 VAC	600 VAC	
30/32 A	LDS30-AX	Non-Fused	—	2	5	5	5	10	20	25	
	LDS30-AC	Non-Fused w/Aux. Contact AUXNO	—	2	5	5	5	10	20	25	
	LDS30-FAX	Fused	2	—	3	7.5	10	7.5	15	20	
	LDS30-AXC	Non-Fused w/ Inform, Remote Monitoring (Wi-Fi)	—	2	5	5	5	10	20	25	
	LDS30-ACC	Non-Fused w/ Inform, Remote Monitoring (Wi-Fi) and w/Aux. Contact AUXNO	—	2	5	5	5	10	20	25	
	LDS30-AXS	Non-Fused w/ Inform	—	2	5	5	5	10	20	25	
	LDS30-ACS	Non-Fused w/ Inform and w/Aux. Contact AUXNO	—	2	5	5	5	10	20	25	
	LDS30-0MB	Non-Fused w/ Inform, Remote Monitoring (Modbus RTU)	—	2	5	5	5	10	20	25	
	LDS30-AMB	Non-Fused w/ Inform, Remote Monitoring (Modbus RTU) and w/Aux. Contact AUXNO	—	2	5	5	5	10	20	25	
	LDS30-CT	Curve Top, Non-Fused	—	2	5	5	5	10	20	25	
	LDS30-ACT	Curve Top, Non-Fused w/ Aux. Contact AUXNO	—	2	5	5	5	10	20	25	
	LDS30-CTS	Non-Fused w/ Inform	—	2	5	5	5	10	20	25	
	LDS30-CTC	Non-Fused w/ Inform, Remote Monitoring (Wi-Fi)	—	2	5	5	5	10	20	25	
LDS30-CTM	Non-Fused w/ Inform, Remote Monitoring (Modbus RTU)	—	2	5	5	5	10	20	25		
60 A	LDS60-AX	Non-Fused	—	2	10	20	20	20	40	40	
	LDS60-AC	Non-Fused w/Aux. Contact AUXNO	—	2	10	20	20	20	40	40	
	LDS60-FAX	Fused	2	—	7.5	7.5	7.5	15	30	50	
Amp	Cat No	Description	AC Horsepower Rating (hp)								
			Single Phase				Three Phase				
			110 to 120 VAC	220 to 240 VAC	277 VAC	440 to 480 VAC	550 to 600 VAC	110 to 120 VAC	220 to 240 VAC	440 to 480 VAC	550 to 600 VAC
100 A	LDS10-AX	Non-Fused	7.5	20	25	30	30	15	40	60	50
	LDS10-AC	Non-Fused w/Aux. Contact AUXNO	7.5	20	25	30	30	15	40	60	50
Amp	Cat No	Description	Single Phase				Three Phase				
			120 VAC	208 to 240 VAC	480 VAC	600 VAC	208 to 240 VAC	480 VAC	550 to 600 VAC		
100 A	LDS10-FAX	Fused	5	15	15	15	30	60	75		

SAFETY DISCONNECT SWITCH ACCESSORIES APPEAR ON BACK COVER



Safety Disconnect Switch Accessories

Cat No	Description
LDS30-RCS	30/32 A Non-Fused Replacement Cover – Inform
LDS30-RCC	30/32A Non-Fused Replacement Cover – Inform, Remote Monitoring (Wi-Fi)
LDS30-RCM	30/32A Non-Fused Replacement Cover – Inform, Remote Monitoring (Modbus RTU)
AUXNO	Rated 10 A 600 V, For Use With 30/32/60/80 A Devices Non-Fused Aux Contact - Normally Open
AUXNC-NF	Rated 10 A 600 V, For Use With 30/32/60/80 A Devices Non-Fused Aux Contact - Normally Closed
AUXNO-NF1	Rated 10 A 600 V, For Use With 100 A Devices Non-Fused Aux Contact - Early Break
AUXNO-F1	Rated 10 A 600 V, For Use With 30/32 A Devices Fused Aux Contact - Normally Open
AUXNC-F1	Rated 10 A 600 V, For Use With 30/32 A Devices Fused Aux Contact - Normally Closed
AUXNO-F2	Rated 10 A 600 V, For Use With 60/100 A Devices Fused Aux Contact - Normally Open
AUXNC-F2	Rated 10 A 600 V, For Use With 60/100 A Devices Fused Aux Contact - Normally Closed
30ASW	30/32 A Non-Fused Replacement Switch
6080A-NF	60/80 A Non-Fused Replacement Switch
100SW-NF	100 A Non-Fused Replacement Switch
30ASW-F	30/32 A Fused Replacement Switch
60ASW-F	60 A Fused Replacement Switch
100SW-F	100 A Fused Replacement Switch

Cat No	Description
HUB-34	Watertight Conduit Hub, Die-Cast Zinc, ¾"
HUB-100	Watertight Conduit Hub, Die-Cast Zinc, 1"
HUB-114	Watertight Conduit Hub, Die-Cast Zinc, 1 ¼"
HUB-112	Watertight Conduit Hub, Die-Cast Zinc, 1 ½"
HUB-200	Watertight Conduit Hub, Die-Cast Zinc, 2"
SSHUB	Watertight Conduit Hub, Stainless Steel, ¾"
MOUNT-LDS	Mounting Feet for Non-Metallic Disconnects
HNDLE	Replacement Handle

NOTE: Separate mounting bracket needed for attaching fused auxiliary contacts to switch. Contact Customer Service for availability.

Does your facility use
Mechanical Interlocks?

ALSO AVAILABLE WITH INFORM!

Real-time diagnostics
help to reduce
unplanned downtime

In addition to local LED indicators,
remote monitoring allows for 24/7
access to device data, such as:

- Liquid accumulation
- Enclosure temperature and humidity
- Line- and load-side voltage values
- Ground continuity
- And more



LEV Series
Mechanical Interlocks
with Inform Technology

[Learn more at **leviton.com/levseries**](https://www.leviton.com/levseries) >>

Visit our Website at:
www.leviton.com/powerswitch
email: industrial@leviton.com

Q-921I

Leviton Manufacturing Co., Inc.
201 N Service Rd, Melville, NY 11747
Telephone: 1-800-323-8920 • FAX: 1-800-832-9538
Tech Line: 1-800-824-3005 (M-F 8AM-10PM; Sat 9AM-7PM; Sun 9AM-5PM)

© 2024 Leviton Manufacturing Co., Inc. All rights reserved.

050124