

Project:	Catalogue #:	Type:
Notes:		

Product Description

An Intellect enabled premium-grade LED slim profile linear luminaire. This precision formed steel suspended mount luminaire comes with a lay-in frosted lens that offers visual comfort for new-construction indoor architectural and retail applications. This luminaire features standalone occupancy sensor with daylight harvesting or a wireless occupancy/daylight sensor that integrates into the Intellect wireless control system.

Applications

Lobby, Boardrooms, Office Area Lighting, Retail Stores and Supermarkets

Features

- Frosted lens
- Available in nominal lengths 4 and 8 feet
- 80+ and 90+ CRI
- Standard low voltage dimming (0-10v)
- Standard 4-ft 5-wire white cord power feed with aircraft cable
- Intellect occupancy/daylight sensor

Featured Options

- Dimming Addressable Digital (DALI) Driver

Optical System

Standard lay-in frosted diffuser offer high levels of efficiency and visual comfort.

Mounting

Adjustable aircraft cable mounting system used at each hanging location. (Sold separately, see Page 3, Mounting Kits).

Construction

Precision-formed steel housing assembly.

Finish

White, polyester powder painted housing.

Electrical

Long life LEDs coupled with high efficiency drivers provide quality illumination. Rated to deliver L80 performance > 50,000 hours.

Warranty

5 year limited warranty. For complete warranty, click here:

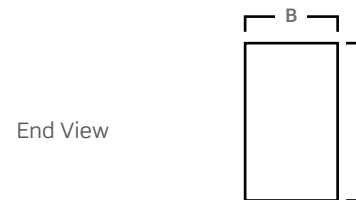
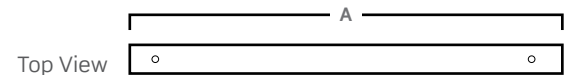


Approvals

- Built to CSA and UL standards.
- Suitable for Damp Location



Dimensions



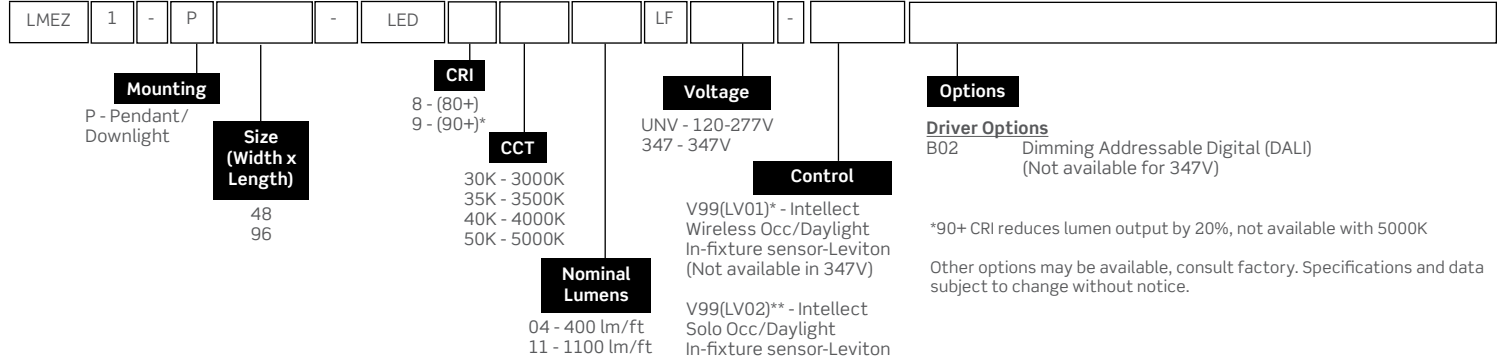
Size	A	B	C
48	44 3/8"	1 5/8"	2 1/2"
96	88 1/2"		

Consult installation guide for exact dimensions.

Project:	Catalogue #:	Type:
Notes:		

Order Key

EXAMPLE: LMEZ1- P48-LED840K04LFUNV-V99(LV01)



* Keypad room controller required.
** Remote controller available.
Required to set daylight harvesting threshold.

Performance Data

Size	Nominal lm per Foot Down	Total Delivered lm Down	Total Watts	lm/W
48"	400	1641	16	102.8
	1100	4381	45.8	95.7
96"	400	3282	31.9	102.8
	1100	8761	91.5	92

NOTE: Lumens and wattage based on 80CRI 4000K CCT at 25 Degrees Celsius

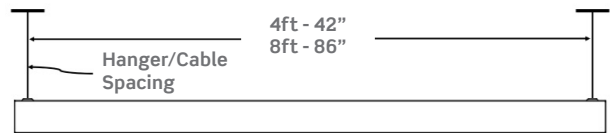
Performance Scaling Factor

	50K	40K	35K	30K
80CRI	1.000	1.000	0.960	0.946
90CRI	0.875	0.875	0.836	0.809

Mounting Kits

Part#	Description
KIT00292 (White) KIT00237 (Black)	48" Aircraft Cable & Canopy
KIT00293 (White) KIT00238 (Black)	5-Wire 18ga UNV Power Supply with 48" Aircraft Cable & Canopy
KIT00230 (White) KIT00253 (Black) [†]	6-Wire UNV Power Feed with 48" Air Craft Cable & Canopy (Emergency)
KIT00294 (White)	3-Wire 347V Power Feed with 48" Air Craft Cable & Canopy (Non-dimmable)
KIT00295 (White)	5-Wire 347V Power Feed with 48" Air Craft Cable & Canopy

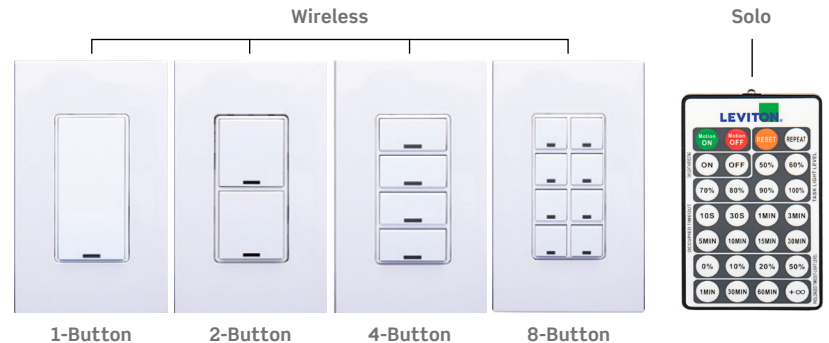
Mounting Points



Intellect Controllers (Ordered Separately)

Item No.	Description	Sensor Type Compatibility
KIT00226	8 Buttons Keypad	V99(LV01)
KIT00227	4 Buttons Keypad	V99(LV01)
KIT00228	2 Buttons Keypad	V99(LV01)
KIT00229	1 Button Keypad	V99(LV01)
ELC00368	Remote Controller	V99(LV02)

*Wall plate by others



Keypad Room Controller

Remote Controller