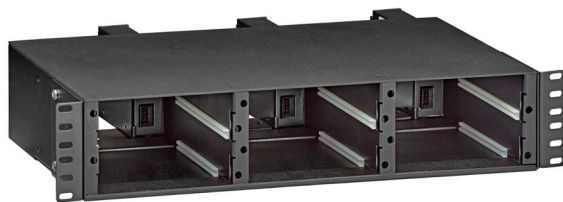


OneReach™ Power Injection Devices

2U Chassis with Class 2 Power Output Terminal Blocks

APPLICATION

With options to power one device or many, the OneReach Power Injector (PI) seamlessly becomes a part of the network infrastructure, with the injector chassis installing in a standard 19" rack.



DESCRIPTION

The two-RU chassis provides a means to simplify installation for OneReach and Remote PoE Ports. It has six slots for media modules and power supply modules, and supports up to 16 remote network devices. This chassis also possesses the necessary circuitry to provide NFPA 70 Article 725 Class 2 compliant power when used with OneReach power supply modules.

BENEFITS

- Simplifies device management
- Enables UPS consolidation
- Uses simple screw terminal connections
- Supports multiple Remote PoE Ports and powered network devices, in a space-saving footprint
- Supports N+1 redundancy

STANDARDS & REGULATIONS

- c(UL)us Listed
- IEC/UL 60950-1
- CAN/CSA C22.2 No. 60950-1-07 (R2012) + A1:2011 + A2:2014 for Class 2 power sources
- Surge immunity per IEC EN 61000-4-5: Class 4: 4 kV
- RoHS Compliant to Directive 2011/65/EU (or most current RoHS legislation)
- EIA/ECA-310-E

MECHANICAL SPECIFICATIONS

Weight: Approximate net weight 8 lb (3.6 kg)
Materials: Aluminum
Mounting Width: 19.00 in (482.6 mm)
Length: 10.23 in (259.8 mm)
Mounting Height: 3.40 in (86.4 mm)

Temp. (Storage): -25 °C to +85 °C (-13 °F to +185 °F)
Temp. (Installation): 0 °C to +50 °C (+32 °F to +122 °F)
Temp. (Operating): 0 °C to +40 °C (+32 °F to +104 °F)
Altitude (Operating): -300 ft to 10,000 ft (-91.4 m to 3,048 m)
Humidity (Max.): 90% relative humidity, non-condensing

WARRANTY INFORMATION

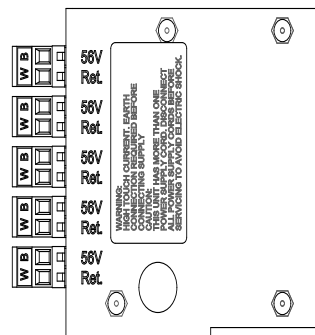
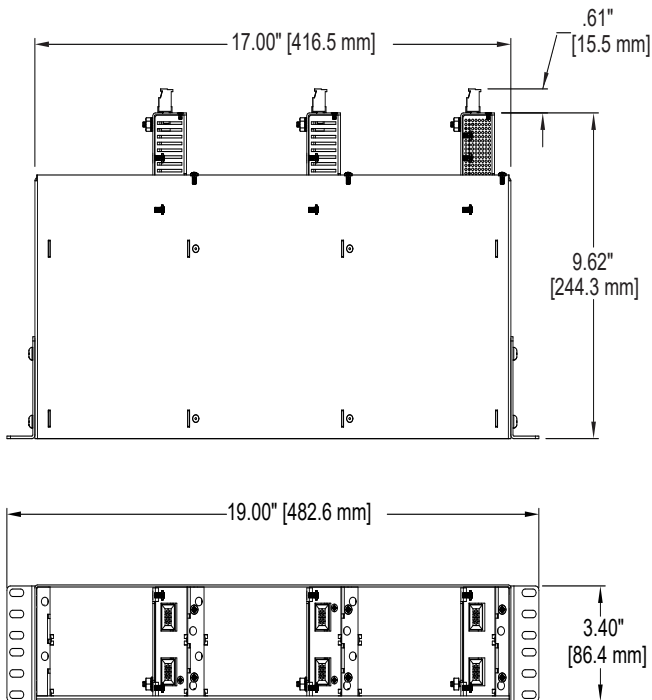
For Leviton product warranties, go to leviton.com/ns/warranty

81001531

PRODUCT SPECIFICATIONS

81001531

81001531



Rear Terminal Block Connections

CHARACTERISTICS

Construction

Color	Black
Connector type	15 screw down terminals (for copper connections)
Number of rack units	2
Number of slots	6

Electrical

Maximum power supported*	750 W (three power supply modules, part number 81001536)
--------------------------	--

*A minimum of one power supply is required for operation

PART NUMBER

Description	Part No.
6-Slot 2U Power Injection Chassis	81001531

For further support information, visit leviton.com/ns/support

Page 2 of 2

USA
Network Solutions Headquarters
+1 (800) 722 2082
infoUSA@leviton.com

Leviton Berk-Tek Cable: +1 (800) 237 5835
berktek.info@leviton.com

Asia Pacific
+852 3620 2602
infoAPAC@leviton.com

Canada
+1 (800) 461 2002
infoCanada@leviton.com

Europe
+44 (0) 1592 772124
infoEurope@leviton.com

Latin America
MX: +52 (55) 2128 6286
LATAM: +52 (55) 2333 5963
infoLATAM@leviton.com

Middle East & Africa
+971 (4) 247 9800
infoMEA@leviton.com

NETWORK SOLUTIONS PRODUCTS ARE AVAILABLE WORLDWIDE IN OVER 100 COUNTRIES. VISIT US ONLINE AT LEVITON.COM/NS TO LEARN MORE.