

Making a

# SUSTAINABLE Difference

What are Environmental Product Declarations?

Leviton Network Solutions is now providing Environmental Product Declarations (EPDs) on end-to-end copper systems. As a global leader, we are committed to protecting the environment through the **design, manufacture, and delivery of sustainable network infrastructure**. We believe it is our responsibility to make an impact by fostering sustainability through our behavior and building solutions to help preserve the environment.

An EPD is a third-party verified and registered document that communicates a standard set of information about the **life-cycle environmental impact of products**. It is created in compliance with Type III Environmental Declaration (ISO 14025).

*continued on pg. 2*

*continued from pg. 1*

In order to create an EPD, a Life Cycle Assessment (LCA) is completed. The LCA is an **evaluation of a product's performance over its entire life cycle**, from the initial raw materials, through to the final disposal. The EPD reports important information on the lifecycles impact to our Earth, atmosphere, and aquatic systems.



### **WHY ARE GREEN BUILDING CERTIFICATIONS VALUABLE?**

Each rating system aims to mitigate the impact of buildings on the natural environment through sustainable design, however green building ratings, or certification systems, broaden the focus beyond the product to consider the entire project. Green Building certification also provides incentives for clients, owners, designers, and users to develop and promote highly sustainable construction practices. It is important to note that a building does not have to be certified to be sustainable and well-built.

These certifications provide a framework for assessing the environmental performance of buildings and promoting sustainable design, construction, and operation practices. They help building owners and occupants reduce their environmental impact by encouraging the use of energy-efficient technologies, renewable energy sources, and sustainable materials. Green building certifications can also help building owners demonstrate their commitment to sustainability to customers, employees, and the wider community. EPD's are one way of contributing towards a building green certification scheme.

### **WHY ARE EPDS IMPORTANT?**

Now more than ever it is vital for businesses to act by conserving valuable natural resources and limiting their emissions to avoid the more severe trajectories of climate change. Leviton Network Solutions has acted by investing in environmental certifications consistent with green building practices and providing valuable tools allowing businesses to make more sustainable choices when it comes to buying and installing networking products.

### **WHAT ARE GREEN BUILDING CERTIFICATION PROGRAMS?**

EPDs play a key role in contributing towards the many standards, ratings, and certification programs in the marketplace and help guide, demonstrate, and document efforts to deliver sustainable, high-performance buildings.

Building owners and their customers are increasingly conscious of the need to transition to a sustainable built environment and Green Building certification programs play an important part in this transition. These programs rate or score building performance against specific sustainability goals and requirements., encouraging choices in building construction that will help protect the environment. EPDs play a key role in fulfilling the goals of green building initiatives. Initiatives such as BREEAM, Leadership in Environmental Design (LEED), Green Building Initiative (GBI), Estidama, and Global Sustainability Assessment System (GSAS) utilize EPDs to evaluate construction materials for their sustainability, and award credits and certifications for projects based on the materials used.

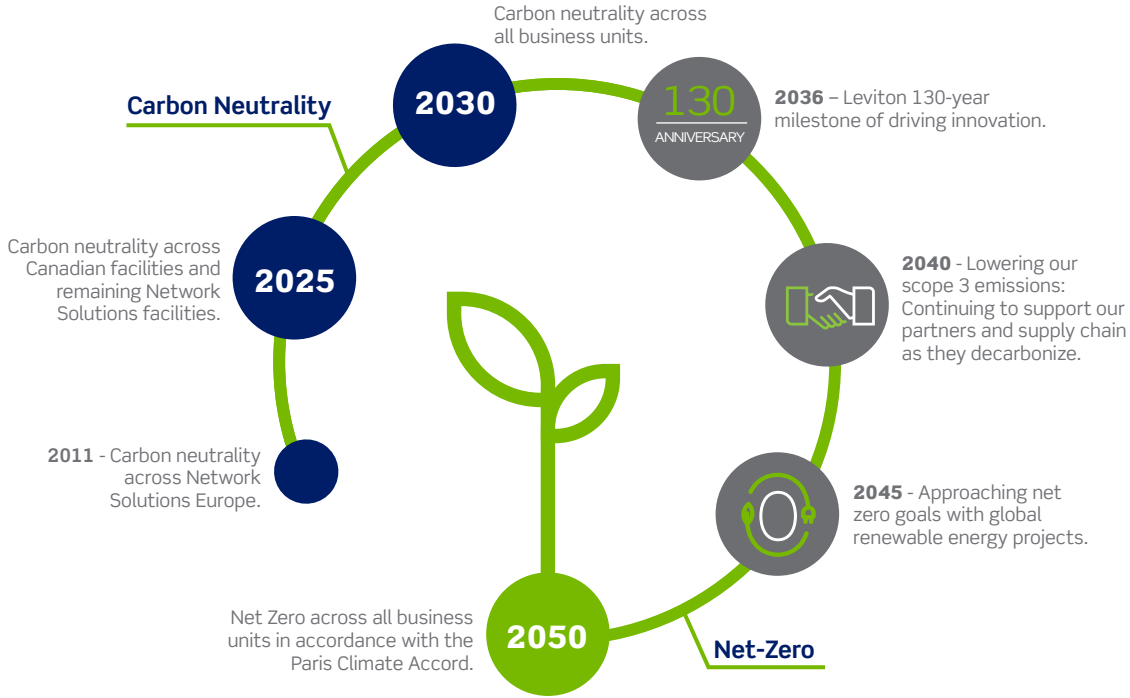




**LEVITON'S COMMITMENT TO SUSTAINABILITY**

Our goal is to make an impact by fostering sustainability with how we behave and building solutions that help preserve our environments and cultivate our communities. We believe in a carbon-free future and our goal is carbon neutrality across our business operations by 2030. Our ambition is to be net-zero by 2050.

Leviton is working to enable our customers to be more sustainable by providing EPDs for our products. Additionally, Leviton is providing EPDs for the products in our MILLENNIUM™ copper systems. These EPDs can be used to quantify the carbon footprint not only for individual products, but for end-to-end, global structured cabling systems.



**LOOKING TO LEARN MORE?**

Leviton's Environmental Product Declarations (EPDs) contribute towards points in various programs around the world including, BREEAM, GBI, LEED, GSAS, and Estidama/Pearl. For more detailed information, please refer to the program specifics regarding EPDs.

[www.Leviton.com/Sustainability](http://www.Leviton.com/Sustainability)

**EPDs for Leviton Network Solutions products:**

Visit our Sustainable Network Infrastructure page at [www.Leviton.com/NS/Sustainability](http://www.Leviton.com/NS/Sustainability)

**EPD-specific information:**

[www.usgbc.org](http://www.usgbc.org)

**Green building certification information:**

- [Leadership in Environmental Design \(LEED\)](#)
- [Green Building Initiative \(GBI\)](#)
- [BREEAM](#)
- [Estidama](#)
- [Global Sustainability Assessment System \(GSAS\)](#)